

Granulators Series SML

SML 45/60 - SML 45/100 - SML 60/100 - SML 60/145

The Herbold Granulators of the L series are robust and low-noise machines for general purpose applications.

Compact, transportable, easy to clean.

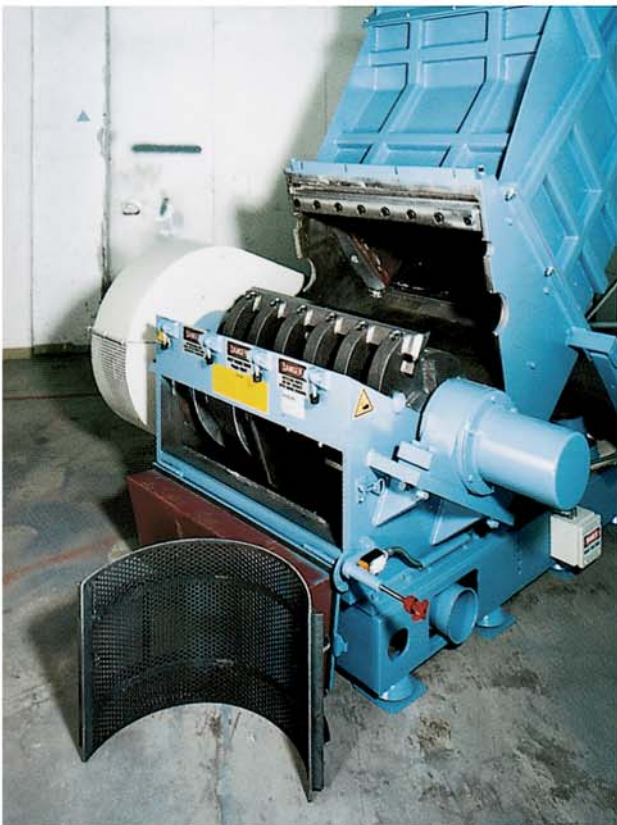
Perfect design for frequent color and material changes.

A very reasonable and varied size reduction program for standard applications.

A workhorse for standard applications

Films, cans, barrels, car bumpers, thin-walled tubes, profiles, injection molding rejects, skeletal waste, thermoforming waste, foams ... - the granulators of the L series are suitable for processing all light, bulky or voluminous plastics scraps with thin or medium walls.

SML 60/100 with hopper for conveyor feeding



The SML Granulators as wet grinders

Due to the outboard bearings, the two-part housing and a modified discharge trough the SML Granulator can be optimally used as a wet grinder. In one working cycle, the contaminated plastic waste is at the same time ground and washed by adding water during the size reduction process. The washing effect is excellent !

Series SML					
Type	Inlet mm inches	Rotor ø mm inches	Drive kW HP	Weight kg lbs	Capacity kg/h* lbs/hr
22/30 35/42 45/70 45/101	Please ask for our catalogue <i>Herbold Granulators C series !</i>				
30/50	500x490 20"x20"	300 12"	11-22 15-30	2500 5512	200-400 440-882
30/80	500x780 20"x31"	300 12"	15-37 21-51	3200 7055	250-650 551-1433
45/60	600x580 24"x23"	450 17,7"	22-55 30-75	3500 7716	300-1000 661-2205
45/100	600x980 24"x39"	450 17,7"	22-75 30-102	3800 8378	500-1400 1102-3086
60/100	720x1488 29"x59"	600 24"	37-110 50-150	6500 14330	800-2000 1764-4409

*Capacity depending on screen size, material and rotor type

The SML series has the typical features of the **Herbold** Granulators:

Easy access to the cutting chamber

The centrally hinged, two-piece housing is divided at an inclined angle and thus allows an optimum access to the cutting chamber. Cleaning and maintenance times are reduced to a minimum.

Double cross cutting action

The rotor and bed knives are mounted at the same but opposite angle and ensure a steady cutting gap across the full length of the knife. This cutting geometry not only lowers the noise level, but also the power requirement. The risk of jamming is reduced and the quality of the regrind is improved due to less fines.

Knives can be adjusted outside of the granulator

The rotor and bed knives can be pre-adjusted outside of the machine in a jig. So, the knives can be prepared for being exchanged while the granulator is still running. This way, the down-times are reduced to an absolute minimum.

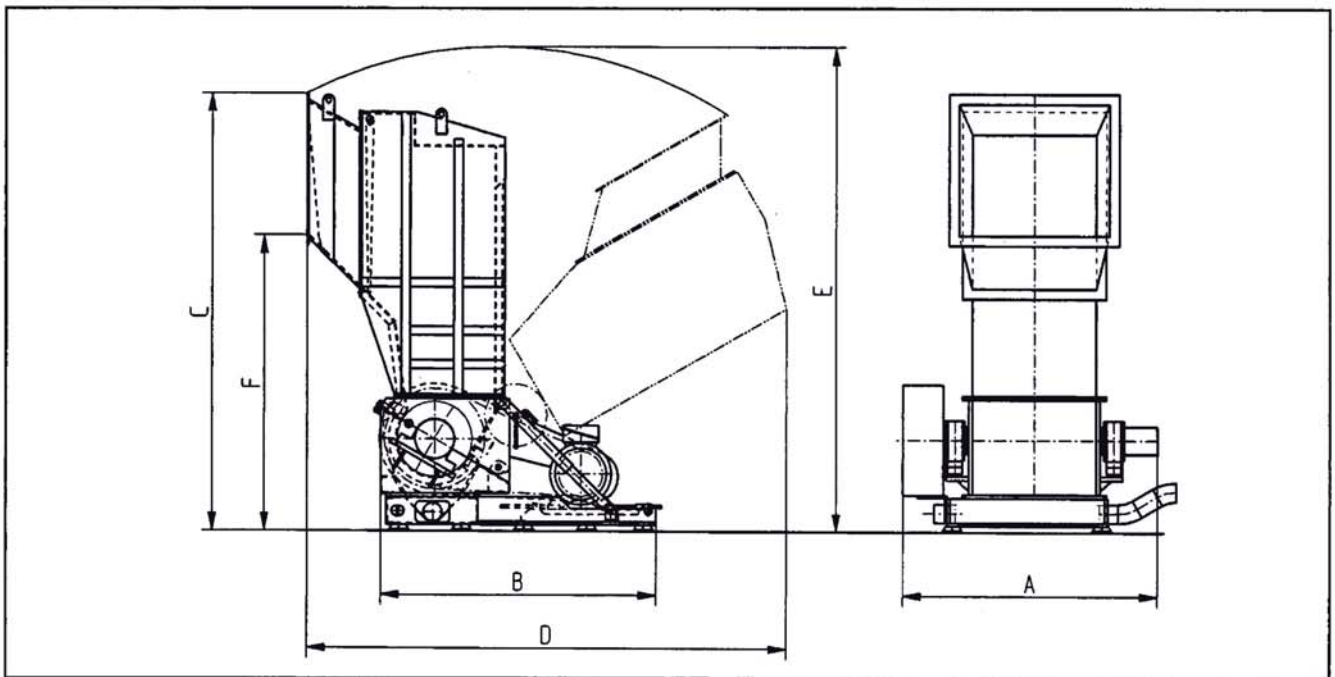
Outboard rotor bearings

The rotor bearings are located in pillow blocks, completely outside and separate from the cutting chamber. No fines can enter the bearings and grease cannot get into the cutting chamber.

Constant cutting circle

Due to the adjustable rotor and bed knives a constant cutting circle is maintained and the distance of the rotor knives to the screen is always the same. As a result, less fines are produced, the materials dwelling time is cut down to a minimum and so prevented from being additionally heated.

Main dimensions in mm / in inches						
Type	A	B	C	D	E	F
SML 45/60	1500 75"	2170 86"	3300 130"	3525 139"	3650 144"	2170 86"
SML 45/100	1900 60"	2170 86"	3300 130"	3525 139"	3650 144"	2170 86"
SML 60/100	2020 80"	2195 87"	3480 138"	3810 150"	3850 151"	2360 93"
SML 60/145	2500 99"	2300 91"	3480 137"	4000 158"	4050 160"	2570 101"



Our product range

- Granulators
- Pulverizing Systems
- Shredders
- Hammer Mills
- HOG Shredders
- Guillotines
- Washing Systems
- Plastcompactors



Herbold Meckesheim GmbH
 Industriestr. 33
 D-74909 Meckesheim
 Germany
 Postfach 1218
 D-74908 Meckesheim
 Tel.: + 49 (0) 6226/ 932-0
 Fax: + 49 (0) 6226/ 932-495
 E-Mail: Herbold@Herbold.com
 Internet: www.Herbold.com

Herbold Meckesheim USA
 Resource Recycling Systems Inc.
 333 George Washington Highway,
 USA-Smithfield,
 Rhode Island, 02917
 Phone: + 1 401 232 3354
 Fax: + 1 401 232 5425
 email: info@herboldusa.net
 www.herboldusa.net